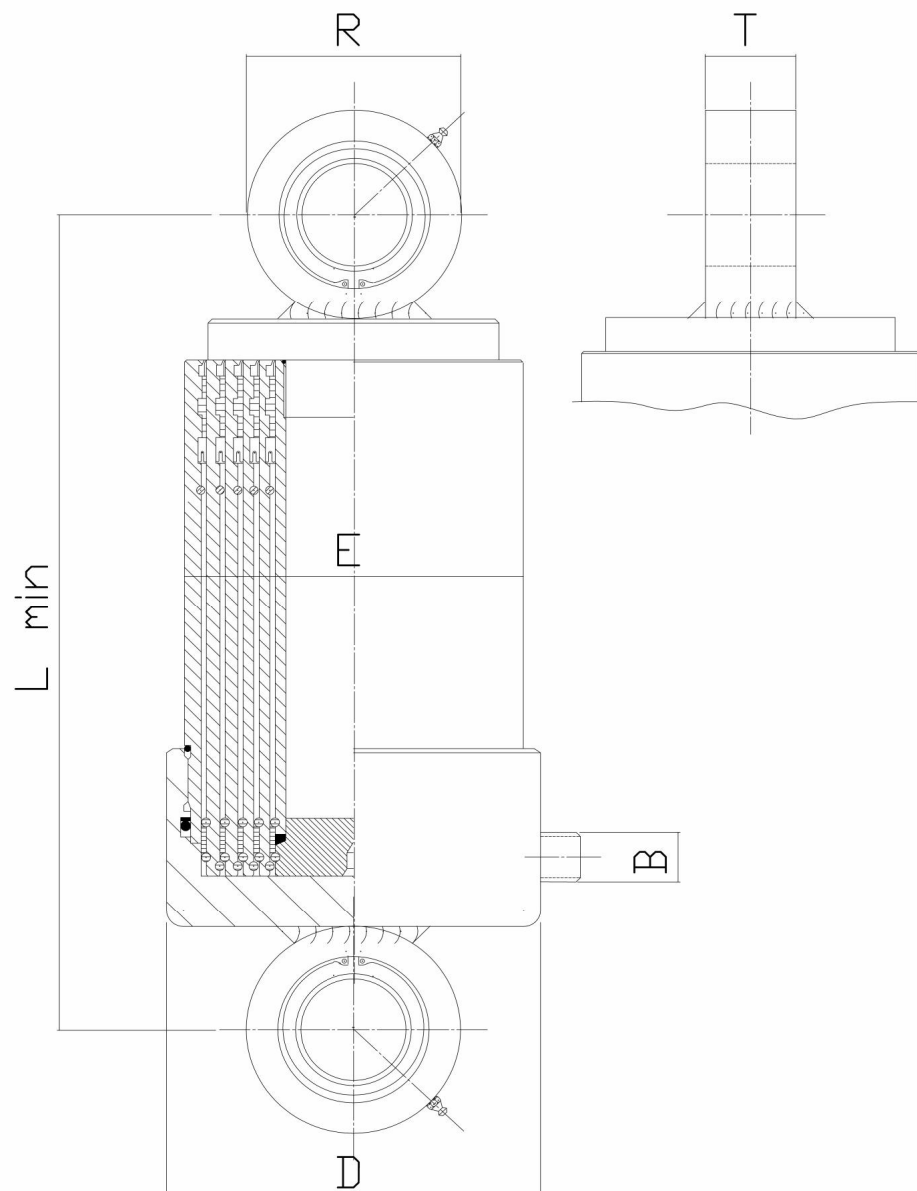


TUBEX

TELESKOPCYLINDER 210 bar. Serie: LL (Lager, Lager).
Max arbetstryck: 210 bar. Kromade steg.

Benämning	Ingående cylindersteg						Slagl. mm.	L min. mm.	Mått	Vikt kg.	Vol. liter
	1	2	3	4	5	6					
LL 90/32-864	75	60	45	32			864	395	CC = L min B = 3/8" utv. D = 103 E = 92 R = 70 T = 25 GE25ES		2,2
LL 90/32-1264	75	60	45	32			1264	495			3,1
LL 90/32-1564	75	60	45	32			1564	570			3,9
LL 90/32-1764	75	60	45	32			1764	620			4,3
LL 90/32-2264	75	60	45	32			2264	745			5,5
LL 90/45-648	75	60	45				648	395			2,0
LL 90/45-948	75	60	45				948	495			2,9
LL 90/45-1173	75	60	45				1173	570			3,5
LL 90/45-1323	75	60	45				1323	620			4,0
LL 90/45-1698	75	60	45				1698	745			5,1



TELESKOPCYLINDER 210 bar. Serie: LL (Lager/Lager).

Max arbetstryck: 210 bar. Kromade steg

Benämning	Ingående cylindersteg						Slagl. mm.	L min. mm.	Mått	Vikt kg.	Vol. liter
	1	2	3	4	5	6					
LL 105/45-864	90	75	60	45			864	410	CC = L min B = 1/2" utv. D = 118 E = 107 R = 82 T = 29 GE30ES		3,9
LL 105/45-1264	90	75	60	45			1264	510			5,7
LL 105/45-1564	90	75	60	45			1564	585			7
LL 105/45-1764	90	75	60	45			1764	635			7,9
LL 105/45-2264	90	75	60	45			2264	760			10
LL 105/60-648	90	75	60				648	410			3,5
LL 105/60-948	90	75	60				948	510			5,0
LL 105/60-1173	90	75	60				1173	585			6,2
LL 105/60-1323	90	75	60				1323	635			7,0
LL 105/60-1698	90	75	60				1698	760			8,9

LL 120/45-1080	105	90	75	60	45		1080	419	CC = L min B = 1/2" utv. D = 133 E = 122 R = 88 T = 30 GE35ES		5,4	
LL 120/45-1580	105	90	75	60	45		1580	519			7,8	
LL 120/45-1955	105	90	75	60	45		1955	594			9,6	
LL 120/45-2205	105	90	75	60	45		2205	644			10,7	
LL 120/45-2830	105	90	75	60	45		2830	769			13,8	
LL 120/60-864	105	90	75	60			864	419			24	5,0
LL 120/60-1264	105	90	75	60			1264	519			29	7,2
LL 120/60-1564	105	90	75	60			1564	594			33	8,9
LL 120/60-1764	105	90	75	60			1764	644				10,0
LL 120/60-2264	105	90	75	60			2264	769				12,8
LL 120/75-648	105	90	75				648	419				4,4
LL 120/75-948	105	90	75				948	519				6,3
LL 120/75-1173	105	90	75				1173	594				8,6
LL 120/75-1323	105	90	75				1323	644				8,8
LL 120/75-1698	105	90	75				1698	769				11,2

LL 138/45-1323	120	105	90	75	60	45	1323	423	CC = L min B = 1/2" utv. D = 158,5 E = 138 R = 88 T = 30 GE35ES		8,8	
LL 138/45-1896	120	105	90	75	60	45	1896	523			12,5	
LL 138/45-2346	120	105	90	75	60	45	2346	598			15,4	
LL 138/45-2646	120	105	90	75	60	45	2646	648			17,5	
LL 138/45-3354	120	105	90	75	60	45	3354	792			22,0	
LL 138/60-1080	120	105	90	75	60		1080	423			7,6	
LL 138/60-1580	120	105	90	75	60		1580	523			39	10,9
LL 138/60-1955	120	105	90	75	60		1955	598			44	13,5
LL 138/60-2205	120	105	90	75	60		2205	648				15,1
LL 138/60-2830	120	105	90	75	60		2830	773				19,3
LL 138/60-3295	120	105	90	75	60		3295	892				24,8
LL 138/75-864	120	105	90	75			864	423				6,9
LL 138/75-1264	120	105	90	75			1264	523			38	10,0
LL 138/75-1564	120	105	90	75			1564	598			41	12,3
LL 138/75-1764	120	105	90	75			1764	648				13,9
LL 138/75-2264	120	105	90	75			2264	773				17,7
LL 138/75-2636	120	105	90	75			2636	892				22,7
LL 138/90-648	120	105	90				648	423				6,5
LL 138/90-948	120	105	90				948	523				9,4
LL 138/90-1173	120	105	90				1173	598				11,5
LL 138/90-1323	120	105	90				1323	648			13,0	
LL 138/90-1698	120	105	90				1698	792			16,6	
LL 138/90-1977	120	105	90				1977	892			19,4	

TELESKOPCYLINDER 210 bar. Serie: LL (Lager/Lager).

Max arbetstryck: 210 bar. Kromade steg.

Benämning	Ingående cylindersteg						Slagl. mm.	L min. mm.	Mått	Vikt kg.	Vol. liter
	1	2	3	4	5	6					
LL 160/60-2346	140	122	105	90	75	60	2346	632	CC = L min B = 3/4" utv. D = 178 E = 162 R = 108 T = 43 GE50ES		21,2
LL 160/60-2646	140	122	105	90	75	60	2646	682			23,9
LL 160/60-3354	140	122	105	90	75	60	3354	825			30,1
LL 160/60-3954	140	122	105	90	75	60	3954	925			35,7
LL 160/75-1580	140	122	105	90	75		1580	556			16,2
LL 160/75-1955	140	122	105	90	75		1955	632			18,6
LL 160/75-2205	140	122	105	90	75		2205	682			21,0
LL 160/75-2830	140	122	105	90	75		2830	806			26,7
LL 160/75-3295	140	122	105	90	75		3295	925			33,5
LL 160/90-1564	140	122	105	90			1564	632			20,1
LL 160/90-1764	140	122	105	90			1764	682			22,6
LL 160/90-2264	140	122	105	90			2264	806			28,9
LL 160/90-2636	140	122	105	90			2636	925			30,2