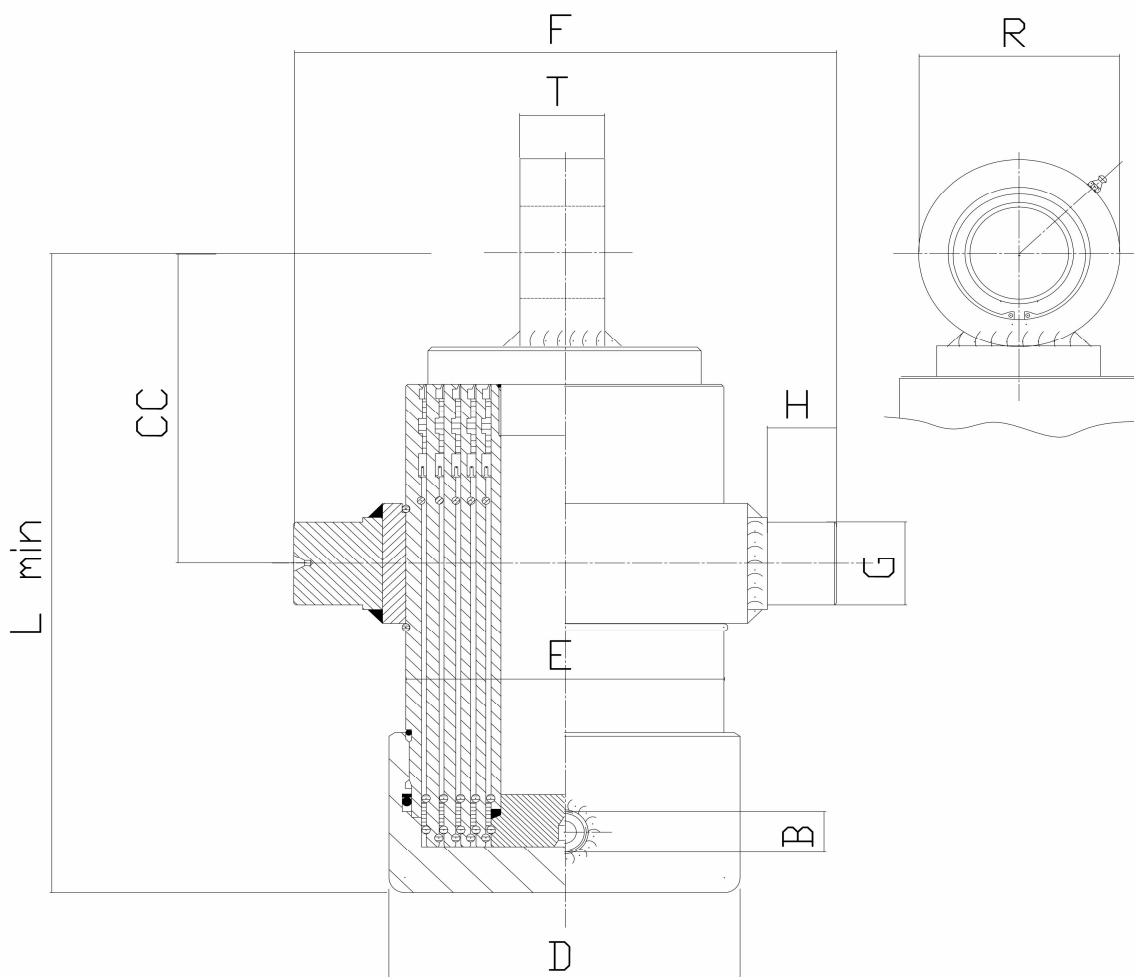


TUBEX

TELESKOPCYLINDER 210 bar. Serie: LO (Lager, Ok).

Max arbetstryck: 210 bar. Kromade steg.

| Benämning | Ingående cylindersteg | | | | | Slagl. mm. | L min. mm. | Mått | Vikt kg. | Vol. liter |
|---------------|-----------------------|----|----|----|---|---------------|---------------|---------------|-------------|---------------|
| | 1 | 2 | 3 | 4 | 5 | | | | | |
| LO 90/32-864 | 75 | 60 | 45 | 32 | | 864 | 365 | CC = 95 | | 2,2 |
| LO 90/32-1264 | 75 | 60 | 45 | 32 | | 1264 | 465 | B = 3/8" utv. | | 3,1 |
| LO 90/32-1564 | 75 | 60 | 45 | 32 | | 1564 | 540 | R = 70 | | 3,9 |
| LO 90/32-1764 | 75 | 60 | 45 | 32 | | 1764 | 590 | D = 103 | | 4,3 |
| LO 90/32-2264 | 75 | 60 | 45 | 32 | | 2264 | 715 | E = 92 | | 5,5 |
| LO 90/45-648 | 75 | 60 | 45 | | | 648 | 365 | F = 154 | | 2,0 |
| LO 90/45-948 | 75 | 60 | 45 | | | 948 | 465 | G = Ø25 | | 2,9 |
| LO 90/45-1173 | 75 | 60 | 45 | | | 1173 | 540 | H = 20 | | 3,5 |
| LO 90/45-1323 | 75 | 60 | 45 | | | 1323 | 590 | T = 25 | | 4,0 |
| LO 90/45-1698 | 75 | 60 | 45 | | | 1698 | 715 | GE25ES | | 5,1 |



TELESKOPCYLINDER 210 bar. Serie: LO (Lager/Ok).

Max arbetstryck: 210 bar. Kromade steg.

| Benämning | Ingående cylindersteg | | | | | Slagl. mm. | L min. mm. | Mått | Vikt kg. | Vol. liter |
|----------------|-----------------------|----|----|----|---|---------------|---------------|---------------|-------------|---------------|
| | 1 | 2 | 3 | 4 | 5 | | | | | |
| LO 105/45-864 | 90 | 75 | 60 | 45 | | 864 | 369 | CC = 152 | | 3,9 |
| LO 105/45-1264 | 90 | 75 | 60 | 45 | | 1264 | 469 | B = 1/2" utv. | | 5,7 |
| LO 105/45-1564 | 90 | 75 | 60 | 45 | | 1564 | 544 | R = 82 | | 7 |
| LO 105/45-1764 | 90 | 75 | 60 | 45 | | 1764 | 594 | D = 118 | | 7,9 |
| LO 105/45-2264 | 90 | 75 | 60 | 45 | | 2264 | 719 | E = 107 | | 10 |
| LO 105/60-648 | 90 | 75 | 60 | | | 648 | 369 | F = 192 | | 3,5 |
| LO 105/60-948 | 90 | 75 | 60 | | | 948 | 469 | G= Ø39 | | 5,0 |
| LO 105/60-1173 | 90 | 75 | 60 | | | 1173 | 544 | H = 25 | | 6,2 |
| LO 105/60-1323 | 90 | 75 | 60 | | | 1323 | 594 | T = 29 | | 7,0 |
| LO 105/60-1698 | 90 | 75 | 60 | | | 1698 | 719 | GE30ES | | 8,9 |

| | | | | | | | | | | |
|----------------|-----|----|----|----|----|------|-----|---------------|----|------|
| LO 120/45-1080 | 105 | 90 | 75 | 60 | 45 | 1080 | 375 | CC = 155 | | 5,4 |
| LO 120/45-1580 | 105 | 90 | 75 | 60 | 45 | 1580 | 475 | B = 1/2" utv. | | 7,8 |
| LO 120/45-1955 | 105 | 90 | 75 | 60 | 45 | 1955 | 550 | R = 88 | | 9,6 |
| LO 120/45-2205 | 105 | 90 | 75 | 60 | 45 | 2205 | 600 | D = 133 | | 10,7 |
| LO 120/45-2830 | 105 | 90 | 75 | 60 | 45 | 2830 | 725 | E = 122 | | 13,8 |
| LO 120/60-864 | 105 | 90 | 75 | 60 | | 864 | 375 | F = 210 | 24 | 5,0 |
| LO 120/60-1264 | 105 | 90 | 75 | 60 | | 1264 | 475 | G= Ø39 | 29 | 7,2 |
| LO 120/60-1564 | 105 | 90 | 75 | 60 | | 1564 | 550 | H = 25 | 33 | 8,9 |
| LO 120/60-1764 | 105 | 90 | 75 | 60 | | 1764 | 600 | T = 30 | | 10,0 |
| LO 120/60-2264 | 105 | 90 | 75 | 60 | | 2264 | 725 | GE35ES | | 12,8 |
| LO 120/75-648 | 105 | 90 | 75 | | | 648 | 375 | | | 4,4 |
| LO 120/75-948 | 105 | 90 | 75 | | | 948 | 475 | | | 6,3 |
| LO 120/75-1173 | 105 | 90 | 75 | | | 1173 | 550 | | | 8,6 |
| LO 120/75-1323 | 105 | 90 | 75 | | | 1323 | 600 | | | 8,8 |
| LO 120/75-1698 | 105 | 90 | 75 | | | 1698 | 725 | | | 11,2 |

| | | | | | | | | | | |
|----------------|-----|-----|----|----|----|------|-----|---------------|----|------|
| LO 138/60-1080 | 120 | 105 | 90 | 75 | 60 | 1080 | 379 | CC = 170 | | 7,6 |
| LO 138/60-1580 | 120 | 105 | 90 | 75 | 60 | 1580 | 479 | B = 1/2" utv. | 39 | 10,9 |
| LO 138/60-1955 | 120 | 105 | 90 | 75 | 60 | 1955 | 554 | R = 88 | 44 | 13,5 |
| LO 138/60-2205 | 120 | 105 | 90 | 75 | 60 | 2205 | 604 | D = 158,5 | | 15,1 |
| LO 138/60-2830 | 120 | 105 | 90 | 75 | 60 | 2830 | 729 | E = 138 | | 19,3 |
| LO 138/75-864 | 120 | 105 | 90 | 75 | | 864 | 379 | F = 230 | | 6,9 |
| LO 138/75-1264 | 120 | 105 | 90 | 75 | | 1264 | 479 | G= Ø39 | 38 | 10,0 |
| LO 138/75-1564 | 120 | 105 | 90 | 75 | | 1564 | 554 | H = 25 | 41 | 12,3 |
| LO 138/75-1764 | 120 | 105 | 90 | 75 | | 1764 | 604 | T = 30 | | 13,9 |
| LO 138/75-2264 | 120 | 105 | 90 | 75 | | 2264 | 729 | GE35ES | | 17,7 |
| LO 138/90-648 | 120 | 105 | 90 | | | 648 | 379 | | | 6,5 |
| LO 138/90-948 | 120 | 105 | 90 | | | 948 | 479 | | | 9,4 |
| LO 138/90-1173 | 120 | 105 | 90 | | | 1173 | 554 | | | 11,5 |
| LO 138/90-1323 | 120 | 105 | 90 | | | 1323 | 604 | | | 13,0 |
| LO 138/90-1698 | 120 | 105 | 90 | | | 1698 | 729 | | | 16,6 |

| | | | | | | | | | | |
|----------------|-----|-----|-----|----|----|------|-----|---------------|--|------|
| LO 160/75-1580 | 140 | 122 | 105 | 90 | 75 | 1580 | 502 | CC = 172 | | 16,2 |
| LO 160/75-1955 | 140 | 122 | 105 | 90 | 75 | 1955 | 577 | B = 3/4" utv. | | 18,6 |
| LO 160/75-2205 | 140 | 122 | 105 | 90 | 75 | 2205 | 627 | R = 108 | | 21,0 |
| LO 160/75-2830 | 140 | 122 | 105 | 90 | 75 | 2830 | 752 | D = 178 | | 26,7 |
| LO 160/90-1564 | 140 | 122 | 105 | 90 | | 1564 | 577 | E = 162 | | 20,1 |
| LO 160/90-1764 | 140 | 122 | 105 | 90 | | 1764 | 627 | F = 275 | | 22,6 |
| LO 160/90-2264 | 140 | 122 | 105 | 90 | | 2264 | 752 | G= Ø45 | | 28,9 |
| | | | | | | | | H = 35 | | |
| | | | | | | | | T = 43 | | |
| | | | | | | | | GE50ES | | |